



**Fresh food,
guaranteed.**



2018 PRODUCT CATALOGUE



Fresher for longer.

With over 60 years of experience in the commercial kitchen and food service industry Hoshizaki has become a name synonymous with quality and innovation. Our wide range of products are designed to suit any fast-paced commercial kitchen needs with superior performance and reliability. All refrigeration products come with a 2 year warranty, **which can be extended to 3 years when products are registered online at www.hoshizaki.com.au/warrantyregistration**. Products have cleanable air filters and are made from top quality materials that will keep your kitchen humming and your food fresher, for longer.

UP TO



2 Year Standard warranty on all refrigeration products, which can be extended to 3 years if products are registered online.



Easy access to air filters for reduced maintenance.



Stainless steel for easy cleaning and longevity.



About Hoshizaki

Founded in 1947 in Nagoya, Japan, Hoshizaki has grown into a global company delivering reliable, innovative commercial products to the world. Our fresh approach to solving commercial needs has resulted in us designing and developing some of the world's most revered ice machines and after all these years continue to strive to develop sustainable products which stand the test of time and stresses of any kitchen.





Our Range

With over 40 products available In Australia we're able to suit any commercial kitchen need. From upright fridges, freezers and counter top solutions to our space saving Pillar Less range, reliability comes as standard.

COMMERCIAL SERIES
Pg 14. Upright

COMMERCIAL SERIES
Pg 15. Counter





4



Professional SERIES

Powered by energy efficient DC fans our reliable, cost effective and easy to maintain Professional Series refrigerators and freezers are available in upright, counter, drawer and Pillar Less variations. They're built tough for Australian kitchen conditions (HACCP rated to 43°C) and

cleaning is easy with stainless steel interior/exteriors, ergonomic easy clean surfaces and heavy duty castors (legs optional). The cleanable air filters mean reduced maintenance and automatic defrost comes as standard on all products.



Removable door gaskets for **easy and quick cleaning** without the need for tools.



Versatile storage solutions with **adjustable shelves** and innovative **Pillar Less range**.



Smart hygienic design with rounded edges and stainless steel materials for easy cleaning.



Accurately control temperatures via the **digital controller**. Cover protects against accidental adjustment or damage.



Easy servicing with a compact slide out refrigeration unit gives easy service access for quick maintenance.



Packed with all the features you'd expect from the Professional series our upright refrigerators and freezers are available as single or double door and feature a full stainless steel construction, Gastronorm specifications, lockable heavy duty castors and off-cycle defrost.



HRE-70B/HFE-70B

HRE-140B/HFE-140B

HRE-70B
REFRIGERATOR

HFE-70B
FREEZER

HRE-140B
REFRIGERATOR

HFE-140B
FREEZER

Part Number	97000101	97000103	97000102	97000104
Capacity	631L APPROX.		1379L APPROX.	1372L APPROX.
Dimensions (w x d x h)	700X850X2015		1400X850X2015	
Packed Dimensions	750X940X2100		1450X940X2100	
Weight	116KG/131KG		164KG/189KG	174KG/199KG
AC Supply Voltage	220-240V / 50HZ / 10AMP			
Defrost System	OFF CYCLE	HEATER	OFF CYCLE	HEATER
Temperature Control	ADJUSTABLE 0°C-16°C	ADJUSTABLE -25°C-7°C	ADJUSTABLE 0°C-16°C	ADJUSTABLE -25°C-7°C
Operating Ambient Temp	5°C-43°C			
Refrigerant	R134A	R404A	R134A	R404A
DC Evaporator Fans	YES	YES	YES	YES
Evaporator Drain Pan	STAINLESS STEEL 170W			
Exterior	430 GRADE STAINLESS STEEL, GALVANISED REAR & BOTTOM			
Interior	STAINLESS STEEL			
Door/Shelves**	1 DOOR / 4 SHELVES		2DOOR / 8 SHELVES	



Suitable for kitchens that wish to maximise food preparation area, our stainless steel counter refrigerators and freezers are a perfect option.



FEATURES

- Unit comes with a stainless steel worktop to double up as a food preparation area. Perfect for space restricted commercial environments.
- Easy access to compressor assembly for easy maintenance
- Energy efficient DC fan (80% more energy efficient than AC fan) considerably reduces amount of energy consumed by the machine reducing its impact on both the environment and your finances.

RTE-120SDA-GN REFRIGERATOR **FTE-120SDA-GN** FREEZER **RTE-170SDA-GN** REFRIGERATOR **FTE-170SDA-GN** FREEZER

Part Number	97000007	97000005	97000008	97000006
Capacity	265L APPROX.		412L APPROX.	
Dimensions (w x d x h)	1200 x 700 x 815		1660 x 700 x 815	
Packed Dimensions	1265 x 780 x 850		1725 x 780 x 850	
Weight Net/Gross	83KG/93KG	87KG/97KG	103KG/115KG	109KG/121KG
AC Supply Voltage	220-240V / 50HZ / 10AMP			
Defrost System	GLASS TUBE HEATER			
Adjustable Temperature	-6°C TO 12°C	-25°C TO -7°C	-6°C TO 12°C	-25°C TO -7°C
Operating Ambient Temp	5°C TO 43°C			
Refrigerant	R134A	R404A	R134A	R404A
DC Evaporator Fans	YES	YES	YES	YES
Evaporator Drain Pan	STAINLESS STEEL 170W			
Exterior	430 GRADE STAINLESS STEEL, GALVANISED REAR AND BASE PANEL			
Interior	STAINLESS STEEL			
Door/Shelves**	2 DOOR / 2 SHELVES		3 DOOR / 3 SHELVES	



Giving you quicker access to regularly used items with dedicated drawers our drawer range is suitable for kitchens that replenishes its produce often while their low height maximises space.



FEATURES

- Stainless steel
- Forced air circulation refrigeration system
- Automatic defrost
- Auto closing drawers
- 2 and 4 drawer options

	RTL-98DDAC REFRIGERATOR	RTL-140DDAC REFRIGERATOR	FTL-140DDAC FREEZER
Part Number	97000034	97000035	97000019
Capacity	85L APPROX.	176L APPROX.	
Dimensions (w x d x h)	980 X 750 X 585	1400 x 750 x 570	
Packed Dimensions	1045 X 830 X 600	1465 x 830 x 560	
Weight	65KG/74KG	93KG/102KG	99KG/108KG
AC Supply Voltage	220-240V / 50HZ		
Defrost System	HEATER		
Temperature Control	-6°C TO 12°C		-23°C TO -7°C
Operating Ambient Temp	5°C TO 38°C		
Refrigerant	R134A		R404A
Legs/Castors	CASTORS 115MM HIGH		
Evaporator Drain Pan	FIN & TUBE TYPE		
Exterior	STAINLESS STEEL DOORS & FRONT, GALVANISED REAR & BOTTOM		
Interior	PRE-COATED STEEL, STAINLESS STEEL DOORS		
Drawers	2	4	



Refrigeration Reimagined

Compact fan motor unit to maximise storage space.

DC fan motor generates less heat than a conventional AC motor and over 80% more efficient.



Unique Pillar Less design lets you fit larger trays, platters, pans and more produce than ever.



Removable door gaskets for **easy cleaning** without the need for tools.



Easy access to **removable air filter** for quick servicing.



Smart hygienic design with rounded edges and stainless steel materials for easy cleaning.



Pillar Less design for larger storage and convenient access.



Gastronome option available

The Pillar Less range builds on the technology and innovation of the Professional Series to create space-saving solutions which maximise capacity and usefulness.



The diverse options range from single, double or split doors make this range perfect for any commercial kitchen need but especially for restaurants who produce or need to store the largest of dishes. With no centre pillar you can use trays and containers of varying sizes.



HRE-127B-ML/HFE-127B-ML

HRE-147B-ML/HFE-147B-ML

HRE-187B-ML/HFE-187B-ML

	HRE-127B-ML REFRIGERATOR	HFE-127B-ML FREEZER	HRE-147B-ML REFRIGERATOR	HFE-147B-ML FREEZER	HRE-187B-ML REFRIGERATOR	HFE-187B-ML FREEZER
Part Number	97000105	97000112	97000106	97000113	97000107	97000114
Capacity	1109L	1110L	1311L	1304L	1720L	1713L
Dimensions (w x d x h)	1200X800X2050		1400X800X2050		1800X800X2050	
Packed Dimensions	1260X900X2075		1460X900X2075		1860X900X2075	
Legs	150-180 ADJUSTABLE					
AC Supply Voltage	220-240V / 50HZ					
Weight	132KG/158KG	140KG/168KG	152KG/177KG	162KG/187KG	203KG/250KG	213KG/260KG
Defrost System	OFF CYCLE	HEATER	OFF CYCLE	HEATER	OFF CYCLE	HEATER
Temperature Control	-6°C TO 12°C	-25°C TO 7°C	-6°C TO 12°C	-25°C TO 7°C	-6°C TO 12°C	-25°C TO 7°C
Operating Ambient Temp	5°C TO 43°C					
Refrigerant	R134A	R404A	R134A	R404A	R134A	R404A
DC Evaporator Fans	YES					
Evaporator Drain Pan	FIN & TUBE TYPE					
Exterior	SUS 304 & SUS 430 GALVANISED STEEL REAR & BOTTOM					
Interior	SUS 304 & SUS 430 GALVANISED STEEL REAR & BOTTOM					
Door/Shelves**	4 DOOR / 8 PCS		4 DOOR / 8 PCS		6 DOOR / 12 PCS	



This Pillar Less range of refrigeration and freezers are perfect for kitchens looking to maximise their food preparation area and storage. Whilst being Pillar Less, these models have also been designed to fit Gastronorm sized trays.



The worktop can be used as a food preparation area with all models having a resilient stainless steel finish.

RTE-120SDA-GN-ML FTE-120SDA-GN-ML RTE-170SDA-GN-ML FTE-170SDA-GN-ML
REFRIGERATOR FREEZER REFRIGERATOR FREEZER

Part Number	97000091	97000093	97000092	97000094
Capacity	265L		412L	
Dimensions (w x d x h)	1200 x 700 x 815		1660 x 700 x 815	
Packed Dimensions	1265 x 780 x 850		1725 x 780 x 850	
Legs	115 mm Castors			
AC Supply Voltage	220-240V / 50HZ			
Weight	83KG/93KG	87KG/97KG	103KG/115KG	109KG/121KG
Defrost System	MICROPROCESSOR CONTROLLED			
Temperature Control	-6°C TO 12°C	-25°C TO 7°C	-6°C TO 12°C	-25°C TO 7°C
Operating Ambient	5°C TO 43°C			
Refrigerant	R134A	R404A	R134A	R404A
DC Evaporator Fans	FIN & TUBE TYPE			
Evaporator Drain Pan	FIN & TUBE TYPE			
Exterior	STAINLESS STEEL, GALVANISED STEEL REAR/BOTTOM			
Interior	STAINLESS STEEL, ABS PLASTIC			
Door/Shelves**	2 DOOR		3 DOOR	



The Pillar Less range of refrigerator and freezers configured as counters are suitable for kitchens that wish to maximise both food preparation area and storage.



RTC-120 SNA-ML/
FTC-120 SNA-ML

RTC-180SNA-ML/
FTC-180 SNA-ML

The counter models are designed with the slimmest compressor compartment in its class, saving up to 20% of space allowing the user more storage space and less floor space.

	RTC-120 SNA-ML REFRIGERATOR	FTC-120 SNA-ML FREEZER	RTC-180SNA-ML REFRIGERATOR	FTC-180 SNA-ML FREEZER
Part Number	97000108	97000110	97000109	97000111
Capacity	228L		398L	
Dimensions (w x d x h)	1200 x 600 x 800		1800 x 600 x 800	
Packed Dimensions	1265 x 680 x 790		1865 x 680 x 790	
Legs	150-180 ADJUSTABLE			
AC Supply Voltage	220-240V / 50HZ			
Weight	78KG/83KG	84KG/89KG	108KG/114KG	111KG/117KG
Defrost System	MICROPROCESSOR CONTROLLED			
Temperature Control	-6°C TO 12°C	-25°C TO 7°C	-6°C TO 12°C	-25°C TO 7°C
Operating Ambient	5°C TO 43°C			
Refrigerant	R134A	R404A	R134A	R404A
DC Evaporator Fans	FIN & TUBE TYPE			
Evaporator Drain Pan	FIN & TUBE TYPE			
Exterior	STAINLESS STEEL, GALVANISED STEEL REAR/BOTTOM			
Interior	STAINLESS STEEL, ABS PLASTIC			
Door/Shelves**	2 DOOR / 2 PCS		3 DOOR / 3 PCS	



Commercial

SERIES

The Hoshizaki Commercial series of refrigeration and freezers are chefs choice for back of house food storage and preparation. All products are designed for kitchen professionals who demand a reliable cost effective and easy to maintain product.

The Hoshizaki Commercial series of refrigerators and freezers are unsurpassed when it comes to reliability and value for money, improving on the Professional range by adding useful features, such as full height door handles required in fast paced kitchen environments.

The high operating ambient temperature (43°C for upright cabinets & 38°C for counter cabinets) are perfect for Australian conditions and

ensures that the Commercial series meet your demands in all conditions.

The Commercial series offer many features including:

- Split ½ doors for the upright Refrigeration and Freezers.
- Food service size internal shelving systems that allow full interior usage.
- Full height door handles for easier access.
- Self closing doors.
- Fully programmable digital controller.
- HACCP approved.
- Available in a variety of sizes and styles to suit all needs, these cabinets are designed for everyday.



Removable door gaskets for **easy and quick cleaning** without the need for tools.



Versatile storage solutions with **adjustable shelves** and innovative **Pillar Less range**.



Smart hygienic design with rounded edges and stainless steel materials for easy cleaning.



Accurately control temperatures via the **digital controller**. Cover protects against accidental adjustment or damage.



Easy servicing with a compact slide out refrigeration unit gives easy service access for quick maintenance.



Full height door handles for quick and easy access.



Self closing doors.



Fully digital temperature controls.



Packed with all the features you'd expect from the Professional series our upright refrigerators and freezers are available as single or double door and feature a full stainless steel construction, Gastronorm specifications, lockable heavy duty castors and off-cycle defrost.



HRE-77MA/HFE-77MA

HRE-187MA/HFE-127MA

HRE-187MA/HFE-187MA

	HRE-77MA REFRIGERATOR	HFE-77MA FREEZER	HRE-127MA REFRIGERATOR	HFE-127MA FREEZER	HRE-187MA REFRIGERATOR	HFE-187MA FREEZER
Part Number	97000030	97000130	97000031	97000131	97000033	97000133
Capacity	546L	546L	1080L	1070L	1600L	1600L
Dimensions (w x d x h)	700 x 800 x 2015		1200 x 800 x 2015		1800 x 800 x 2015	
Packed Dimensions	760 x 900 x 2075		1260 x 900 x 2075		1860 x 900 x 2075	
Weight Net / Gross	98KG/120KG	102KG/124KG	141KG/172KG	146KG/177KG	184KG/226KG	196KG/238KG
AC Supply Voltage	220-240V / 50HZ 10AMP					
Defrost System	OFF CYCLE	HEATER	OFF CYCLE	HEATER	OFF CYCLE	HEATER
Adjustable Temperature	-2°C TO 12°C	-23°C TO 7°C	-2°C TO 12°C	-23°C TO 7°C	-2°C TO 12°C	-23°C TO 7°C
Operating Ambient Temp	5°C TO 43°C					
Refrigerant	R134A	R404A	R134A	R404A	R134A	R404A
DC Evaporator Fans	YES					
Evaporator Drain Pan	FIN & TUBE TYPE					
Exterior	430 GRADE STAINLESS STEEL, GALVANISED REAR/BOTTOM PANEL					
Interior	STAINLESS STEEL, ABS PLASTIC INTERIOR DOORS					
Door/Shelves**	1 DOOR / 4 SHELVES		2 DOOR / 8 SHELVES		3 DOOR / 12 SHELVES	



Suitable for kitchens that wish to maximise workspace, our stainless steel counter refrigerators and freezers are a perfect option, and offer additional space for food preparation.

As with all of our commercial series models, energy efficient DC fans (80% more energy efficient than AC) considerably reduce the amount of energy consumed reducing its impact on both the environment and your finances.

Compressor assembly can be easily accessed or removed from the machine allowing quick maintenance reducing downtime and costs.



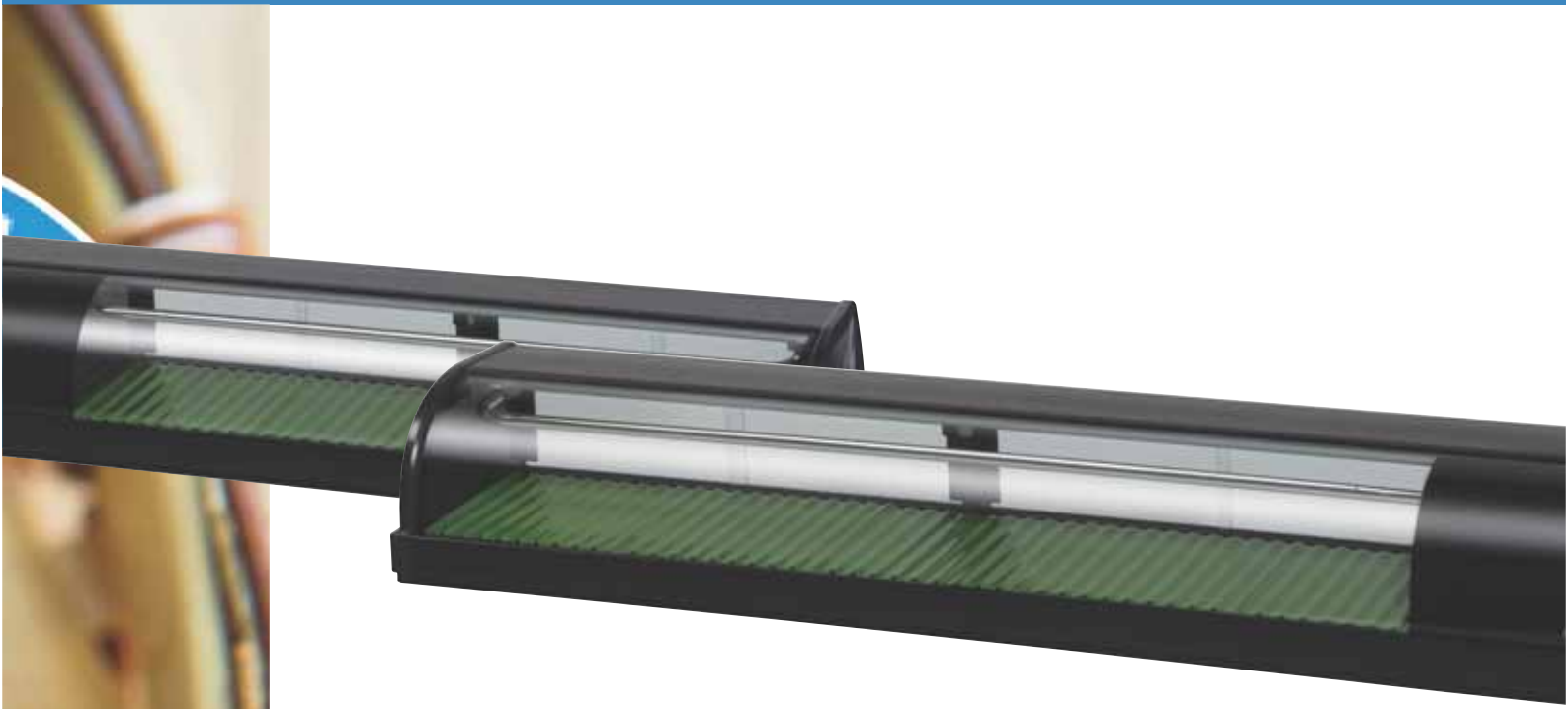
RTC-120MNA/FTC-120MNA

RTC-150MNA/FTC-150MNA

RTC-180MNA/FTC-180MNA

	RTC-120MNA REFRIGERATOR	FTC-120MNA FREEZER	RTC-150MNA REFRIGERATOR	FTC-150MNA FREEZER	RTC-180MNA REFRIGERATOR	FTC-180MNA FREEZER
Part Number	97000050	97000150	970000051	970000151	970000052	970000152
Capacity	228L		313L		398L	
Dimensions (w x d x h)	1200 x 600 x 815		1500 x 600 x 815		1800 x 600 x 815	
Packed Dimensions	1265 x 680 x 800		1565 x 680 x 800		1865 x 680 x 800	
AC Supply Voltage	220-240V / 50HZ 10 AMP					
Weight	67KG/72KG	72KG/77KG	80KG/85KG	86KG/91KG	93KG/99KG	99KG/105KG
Defrost System	OFF CYCLE	HEATER	OFF CYCLE	HEATER	OFF CYCLE	HEATER
Adjustable Temperature	0°C TO 12°C	-23°C TO 7°C	0°C TO 12°C	-23°C TO 7°C	0°C TO 12°C	-23°C TO 7°C
Operating Ambient Temp	5°C TO 38°C					
Refrigerant	R134A	R404A	R134A	R404A	R134A	R404A
DC Evaporator Fans	YES					
Evaporator Drain Pan	FIN & TUBE TYPE					
Exterior	STAINLESS STEEL, GALVANISED REAR/BOTTOM PANEL					
Interior	STAINLESS STEEL, ABS PLASTIC INTERIOR DOORS					
Door/Shelves**	2 DOOR / 4 SHELVES		2 DOOR / 4 SHELVES		3 DOOR / 6 SHELVES	





Sushi CABINETS

With rounded glass windows and slick black exterior Hoshizaki sushi cabinets provide an eye catching point of sales display that look great as well as keeping your sushi perfect, at exactly the right temperature.

With an anti-condensation, anti-drip design, temperature controls and powerful cooling performance humidity levels are maintained at all times. These will no doubt help you make an impression with customers; keeping your sushi fresher for longer and tasting as good as it looks.

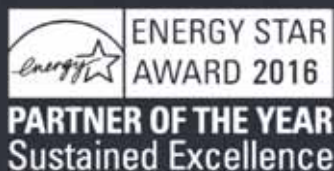
HNC-120AE-R HNC-150AE-R HNC-180AE-R

Part Number	91000057	91000050	91000037
Capacity	42L	57L	72L
Ext. Dimensions w x d x h (mm)	1200X345X280	1500X345X280	1800X345X280
Int. Dimensions w x d x h (mm)	845X288X157	1145X288X157	1145X288X157
Weight Net/Gross	30KG/42KG	36KG/51KG	42KG/60KG
AC Supply Voltage	220-240V / 50HZ / 10AMP		
Operating Ambient	5°C to 43°C		
Operating Temperature	Approx 5°C		
Refrigerant	R134A		
Pulldown Time	STAINLESS STEEL 170W		
Evaporator	430 GRADE STAINLESS STEEL, GALVANISED REAR & BOTTOM		



For our full range and more information visit hoshizaki.com.au

08 8268 1388 info@hoshizaki.com.au



Descriptions and specifications are subject to change at any time, without notice. Illustrations for demonstration purposes only. Elements of the pictures shown within this brochure may not be standard and could incur additional charges. All storage and production capacities are approximates only.

Copyright © 2018 Hoshizaki Lancer Pty Ltd. All rights reserved. E&OE